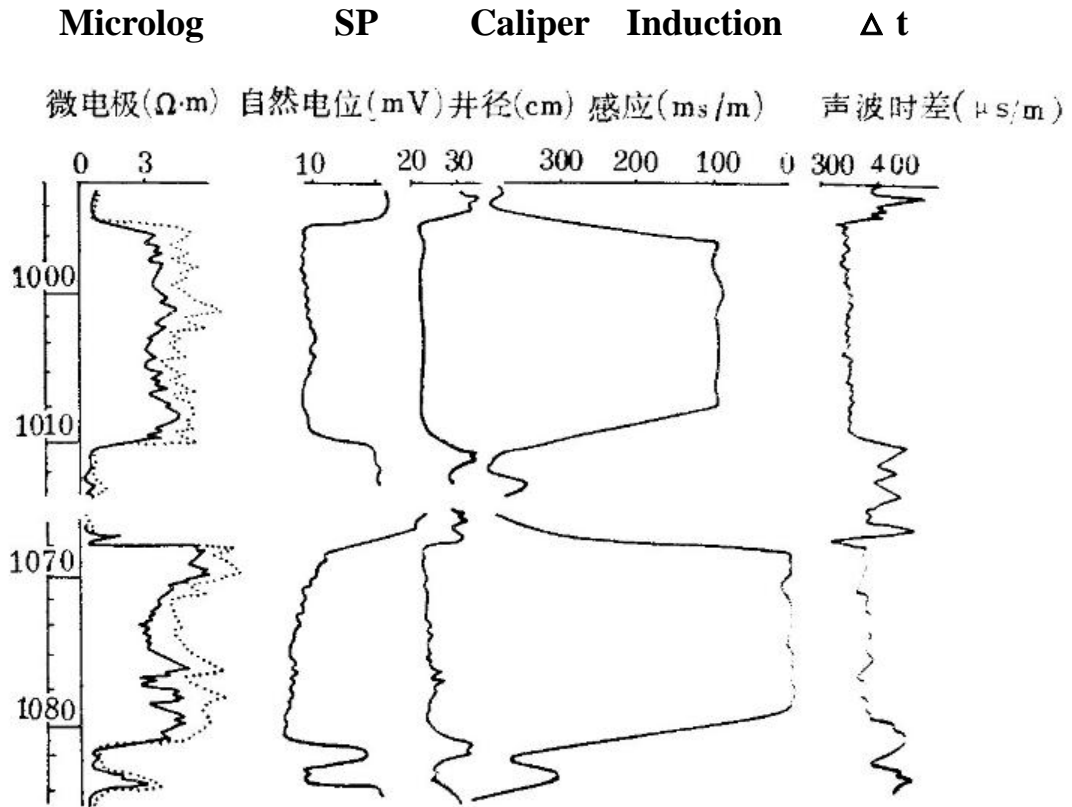


# Exercise 2

## Identification of Reservoirs and Reservoir Fluids

### Part 1

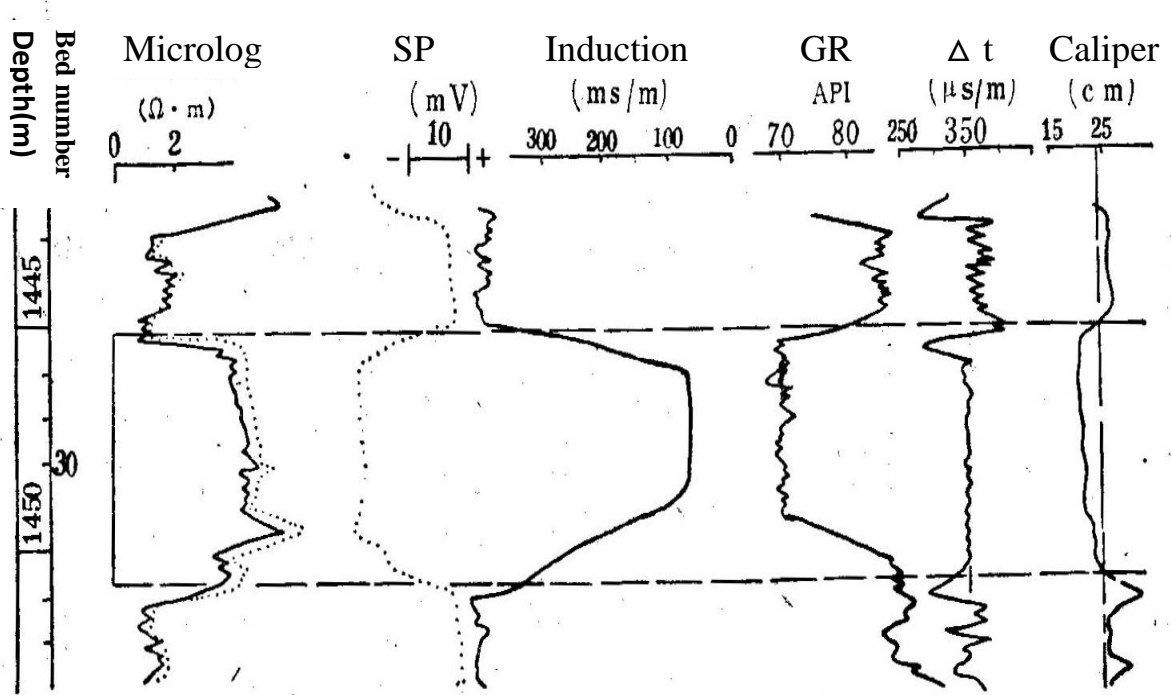
### Identification of Hydrocarbon Reservoirs in Clastic Sections



Comprehensive logging curve for a certain well

## Part 2

### Identification of Low Resistivity Hydrocarbon Reservoirs

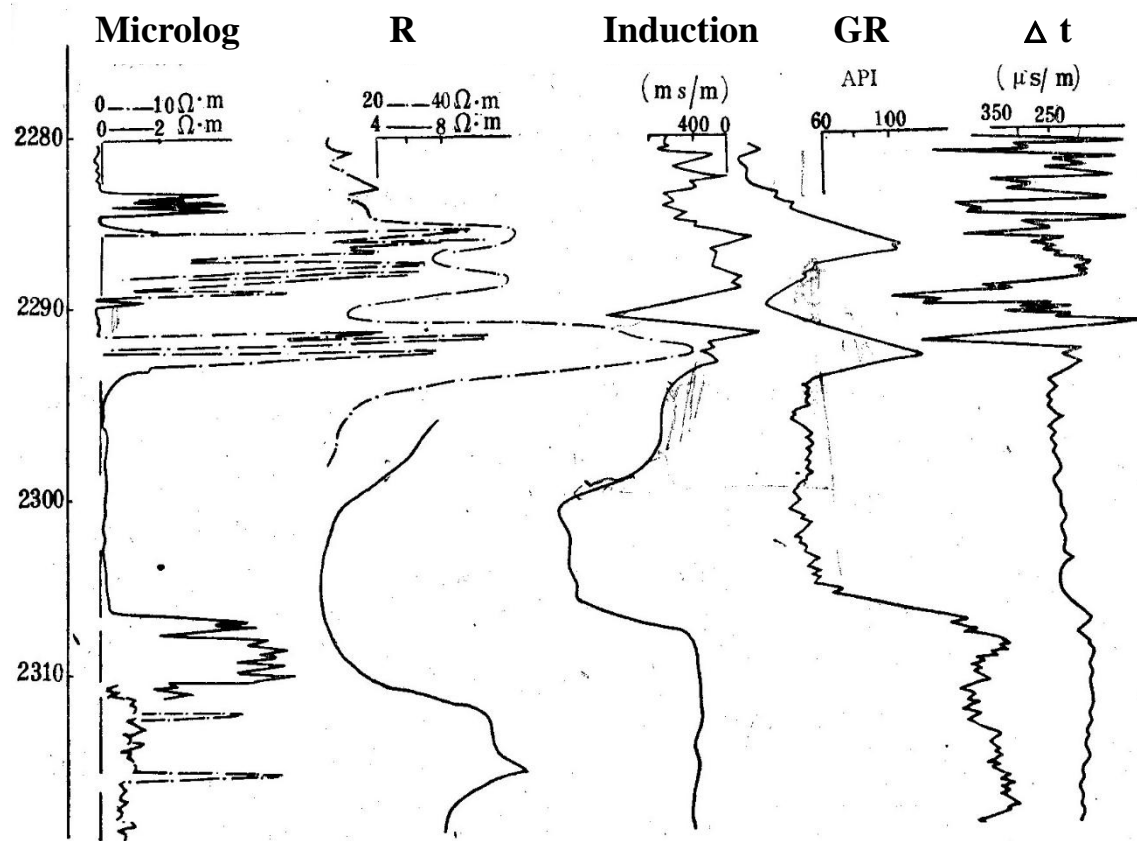


Comprehensive logging curve for a certain well

### Part 3

## Identification of hydrocarbon reservoirs in Gypsum and Salt Rock

### Sections



# Identification of Fractured Hydrocarbon Reservoir in Carbonate Sections

